



# Belt and Road Scholarship Scheme

# The Scholarship

- ❖ To **attract outstanding students from the Belt and Road regions** to pursue full-time publicly-funded university studies in Hong Kong
- ❖ To **further strengthen educational exchanges** between Hong Kong and the Belt and Road regions

# The Scholarship

## December 2015

Launched the dedicated scholarship scheme for **Indonesia**



## 2017/18 Academic Year

Scheme expanded to cover students from **Malaysia and Thailand**



## 2020 onwards

**Up to 100 scholarships**

will be offered annually under the scheme



2015

2016

2017

2019

2020



## 2016/17 Academic Year

**First cohort** of awardees commenced studies

## 2019/20 Academic Year

Scheme expanded to cover students from **Myanmar** and **all other Belt and Road countries** enrolled in eligible **undergraduate** or **research postgraduate** programmes

# The Scholarship

**covers tuition fees for eligible study programmes in full**

Three **sub-types** of the Scholarship:

## Belt and Road Scholarship (Designated Countries)

- Students from
  - **Indonesia**
  - **Malaysia**
  - **Thailand**
  - **Myanmar**
- Enrolled in full-time first year publicly-funded **undergraduate** programmes

## Belt and Road Scholarship (Other Countries)

- Students from **Belt and Road countries\*** other than the designated countries
- Enrolled in full-time first year publicly-funded **undergraduate** programmes

## Belt and Road Scholarship (Research Postgraduates)

- Students from **Belt and Road countries\***
- Enrolled in full-time first year publicly-funded **research postgraduate** programmes

*\*Reference: a list of Belt and Road countries is provided at [The Belt and Road Portal](#)*



# Participating Institutions



CityU

City University of Hong Kong



HKBU

Hong Kong Baptist University



LU

Lingnan University



CUHK

The Chinese University of  
Hong Kong



EdUHK

The Education University of  
Hong Kong



PolyU

The Hong Kong  
Polytechnic University



HKUST

The Hong Kong University of  
Science and Technology



HKU

The University of  
Hong Kong

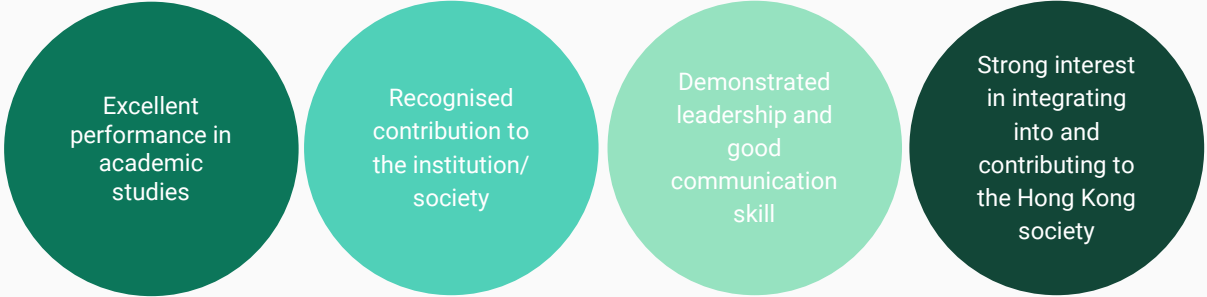


HKAPA

The Hong Kong Academy for  
Performing Arts

# Application and Selection

- ❖ Interested students should **submit applications for admission to the publicly-funded local degree-awarding institutions direct**
- ❖ Participating institutions will consider the following **qualities when selecting awardees:**



Excellent performance in academic studies

Recognised contribution to the institution/society

Demonstrated leadership and good communication skill

Strong interest in integrating into and contributing to the Hong Kong society

- ❖ You may wish to approach the **participating institutions direct** regarding **application and selection procedures**

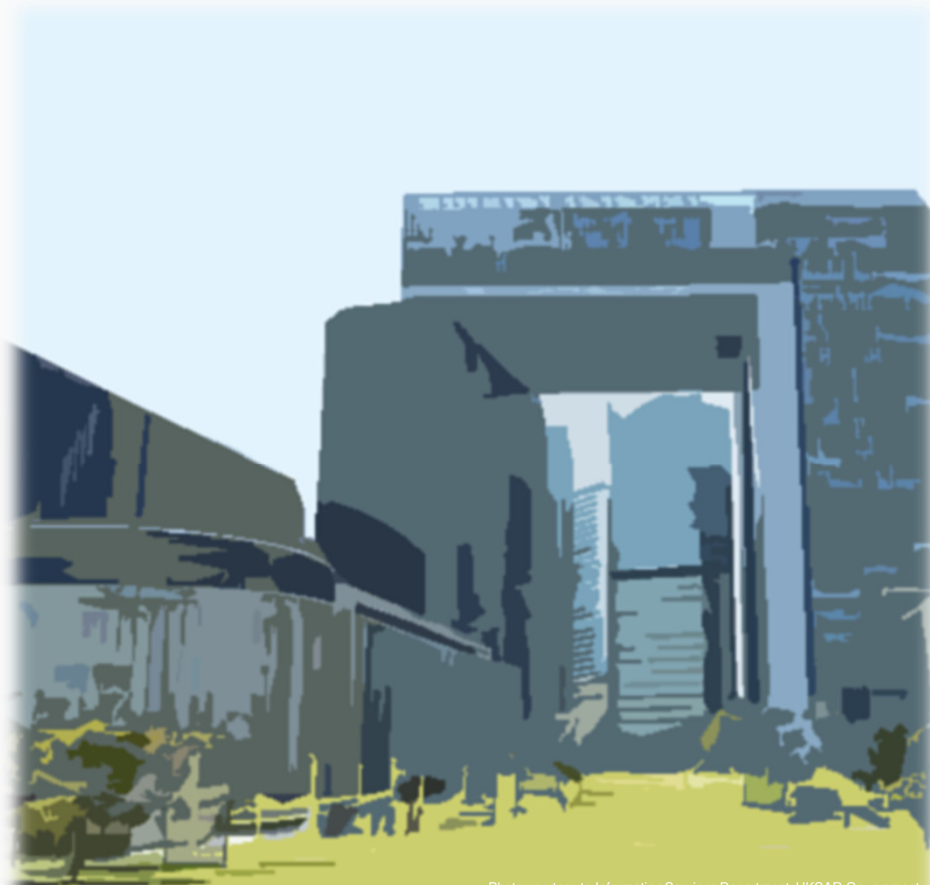


Photo courtesy to Information Services Department, HKSAR Government  
Royalty Free Music from Bensound

- ❖ For **details** on the Scholarship, please visit our website at [www.studyinhongkong.edu.hk](http://www.studyinhongkong.edu.hk)



- ❖ For **enquiries**, please contact the Education Bureau at [hksbr@edb.gov.hk](mailto:hksbr@edb.gov.hk)